

**FREE**  **POPE COUNTY FARM BUREAU**  
**BREAKFAST ON THE FARM**  
MONDAY, SEPTEMBER 1, 2025 LABOR DAY MORNING



# NEWSLINE

August 2025

Residential Rebates pg 3 Member Tour in October pg 4

Join Pope County Farm Bureau for a  
**FREE BREAKFAST ON SEPTEMBER 1, 2025**  
*At Malecha Enterprises, 14846 Co Rd 33, Villard*

**Breakfast & Activities:**  
**8AM to 12PM**

**FREE**  **POPE COUNTY FARM BUREAU**  
**BREAKFAST ON THE FARM**  
MONDAY, SEPTEMBER 1, 2025 LABOR DAY MORNING

Breakfast & activities  
8 AM to  
12 PM



**3rd Gen Family Farm**

## Highlights!

Tours!

Kids' Activities

Dairy!

Cattle pot!

Demonstrations

Bale gym!

Tractors!

Authors!

Farm Animals

More!



Pope County Farm Bureau would like to invite you to their 7th annual Breakfast on the Farm!

What a great opportunity for a family outing!

Located SE of Villard MN, the Malecha Family is excited to showcase their multi generational farm to the community highlighting dairy, diversified farming components and local authors.

Breakfast will be served from 8 - 11 am (or until the food runs out), and activities will last until noon!

Activities include a hay ride, demonstrations, tours, educational booths, animals, play area and more!

**We hope to see you there!**



14846 County Rd 33, Villard, MN

[www.malechaenterprises.com](http://www.malechaenterprises.com)



**Al Haman**  
CEO

## A Note from the CEO

### The more things change

Complete this phrase – The more things change... the more they stay the same. This phrase has been used by poets, songwriters, and movie producers over the years.

This phrase can be used when we talk about REA and

how we serve our members. As we celebrate our 90th anniversary, it has been fun looking through old newsletters and reflecting on how far we have come as an electric cooperative.

Check out the headlines on page 3 from the September 1946 newsletter. Note that our name was still Douglas County Co-op Light & Power Association. As our service territory expanded beyond Douglas County, the name was changed to Runestone Electric Association in 1949.

In 1946, the board reinstated a \$10 reimbursement for members who purchased electric ranges and water heaters. The reimbursement program was discontinued during World War II, when appliances were in short supply. Today, we offer rebates for a variety of appliances (see page 3), and thankfully, we are blessed with many different options that are widely available.

Power poles were also in short supply during World War II, causing many rural residents to wait for electricity to reach their homes and farms. Over the past five years, we have also experienced long lead times when ordering equipment, such as poles; however, thankfully, this is improving. Check out the graphic on page 4 to learn more about today's power pole.

County fair time has always been an exciting time of the year in rural communities. As you'll read on page 3, the Douglas County Fair was delayed due to the polio epidemic. You may recall that this fair, along with many others, was canceled in 2020 due to the COVID-19 pandemic.

I get a kick out of reading the line below "The REA News" – A newspaper designed to further the use of more electricity on the farm and the maintenance of appliances. It's hard to believe that my predecessors struggled to convince rural folks that electricity was a good thing, even a life-changing addition to their lives.

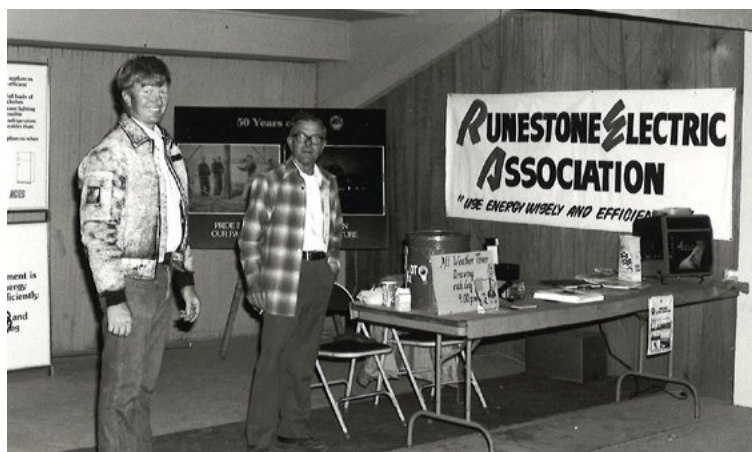
REA's first manager, Cliff Hove, summed it up great in 1946:

"Thirty years ago, they didn't have electricity on the average farm. No milkers, water heaters, food coolers and freezers, or welders and fanning mills that snapped into operation at the click of a switch. Barns weren't lighted and powered with that ever-present, efficient, yet invisible farm hand, electricity.

By the sweat of the brow and the blisters on his hands was the work of the farmer done.

But today, look at the scores of time and labor-saving devices that are operated by electricity."

Eighty years later, the same holds true today. Electricity powers the many devices, tools and equipment we rely on for our everyday lives now and into the future.



**Long-time REA employee Don Lundquist visits with a member at REA's booth below the grandstand.**



**Adeline Yands relaxes in REA's booth at the 1986 Douglas County Fair.**

## REA Board of Director Meeting Highlights - June 2025

- » The June Board Meeting was held at Great River Energy's (GRE's) headquarters in Maple Grove. GRE is REA's wholesale power supplier.
- » Reviewed the Financial Report for May 2025.
- » Updated on the Aclara DRU (Demand Response Unit) and member activities through the Energy Management department.
- » Discussed storm damage to the cold storage building in the pole yard.
- » Guest speakers from GRE joined the meeting to discuss power supply, MISO, and regional transmission.
- » The visit included tours of the facility, Systems Operations and ACES Power Marketing.
- » **August Board Meeting will be Tuesday, August 26, 2025 at 9:00 a.m.**

# The **REA** News

Sec. 562, P. L. & R.  
PAID  
U. S. POSTAGE  
ALEXANDRIA, MINN.  
Permit No. 1

A NEWSPAPER DESIGNED TO FURTHER THE USE OF MORE ELECTRICITY ON THE FARM AND THE MAINTENANCE OF APPLIANCES

VOL. I

SEPTEMBER, 1946, ALEXANDRIA, MINNESOTA

NUMBER 8

## REA To Reimburse For Appliance Installations

### County Fair Opens For 4 Days, September 25-28

Although the hustle and bustle of preparation for the annual Douglas county fair were interrupted a few weeks ago, due to the postponement of the event because of the prevalent polio epidemic, hammers, saws and workmen are again busy on the grounds, as they make ready for the fair opening September 25th for a four-day run.

According to Ralph Thornton, secretary for the fair association, there will be practically the same program as had originally been scheduled with the exception of the Thrill day, which would have been on the opening or Entry day. No Thrill day stunts have been arranged for the postponed fair.

From every section and township in Douglas county, it appears, will come the production of this great county's farmers, and a good many outside the county will be attracted here.

Four great days and nights of performances are scheduled in the exhibit buildings, along the midway and in front of the grandstand, with something doing all the time for everybody and everything doing most of the time for large sections of the crowds.

It is an event that has been years, yet there is still a

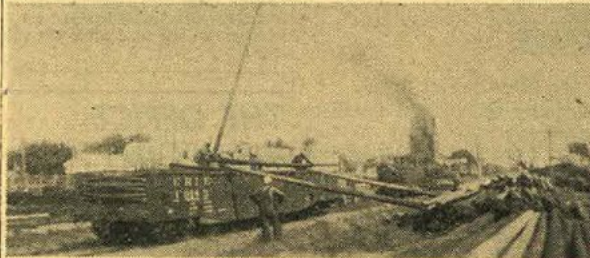
### New Barn Fixtures Installed In Barn In Holmes City Area

Another barn in the Holmes City community has had a complete interior barn fixture set installed, when W. R. Guiles completed his new barn.

The steel stalls, stanchions and pens are Ney equipment purchased from A. P. Hustad, International dealer in Alexandria.

### Mink Season To Open Nov. 1

### Poles Reach Alexandria



A crew unloading some poles at our yards after many attempts to obtain them. The yard is located near the Soo depot in Alexandria. They have been one of the hardest items to obtain by our Association and this should be good news to members.

### Feature Added

In this issue readers will find a new feature added to The REA News which will be included every month, a Roto Gravure section. Every reader has some unusual interest in

### Rulings in Three States Favorable To REA Co-Ops.

The State Supreme courts of Pennsylvania and Arkansas and the Service Commission of North Carolina recently rendered opinions favorable to REA Co-ops. The Supreme Court of North Carolina recently decided in favor of REA Co-ops.

### Board Decides to Reimburse Sum of \$10 On Ranges and Heaters

The board of directors of the Douglas County Co'op Light & Power Association at their last meeting held on August went into effect September 1 and will be in effect until further notice.

This action by the board will meet with the approval of members who propose to purchase these appliances in the future and it is hoped that the move will encourage their use. In the past a reimbursement was given but was discontinued during the war.

The resolution passed by the board at its recently meeting is as follows:

**RESOLVED:** That the Douglas County Co'op, Light & Power Association do reimburse members an amount not to exceed \$10.00 on the cost of installing an electric stove or electric water heater, said heater must be at least 50 gallon capacity, two element machine. Itemized bills must be submitted. The Association reserves the right to furnish stove cable.

Members are urged to come into the REA office to find out more about this plan if there is any doubt in regard to the reimbursement. The Association will be glad to give the needed information.

## 2025 Residential Rebates

### Appliances

Must be purchased or recycled after 1/1/2025

#### Clothes Washer

\$25

#### Clothes Dryer

\$25

#### Recycling of a Refrigerator or Freezer

\$50

#### Dehumidifier

\$25

### Electric Vehicle

#### Qualifying Uncontrolled EV Charger

\$250

#### Qualifying Controlled EV Charger

\$500

### Heating & Cooling

#### Air Source Heat Pump

HSPF<sup>2</sup> 7.5 or greater - \$500  
(No Quality Installation Required)

CEE Tier 1 (Path A or B) - \$900  
(Quality Installation Required)

#### Central Air Conditioner

SEER<sup>2</sup> 14.3+ - \$50  
(Quality Installation Required)

#### Ductless Air Source Heat Pump

\$200

#### Air Source Heat Pump Paired with Plenum Heater or Boiler

Efficiency Rebate  
\$100

#### Geothermal Heat Pumps

\$400

### Electric Thermal Storage (ETS)

Space Heating & Room Storage Heating

\$50/kw up to \$5,000 or 100kw

### Electronically Commutated Motor (ECM)

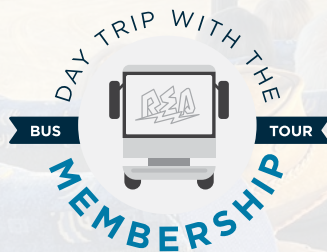
Many of today's high-efficiency furnaces include an ECM that would qualify for this rebate. (Excludes new construction)

\$25

### Smart Thermostat

\$25

All rates and rebates are subject to change  
Contact REA for more information



# Celebrate Co-op Month with REA on a Day Long Bus Trip!

**October 10, 2025 \* 7:30 AM to 4 PM**

Join REA for a day showcasing some REA businesses and their unique energy needs. This year, we will be visiting the Glenwood/Starbuck area with notable stops at CF Industries, the Glenwood Substation, Rolling Forks Vineyard and more!

**Cost: \$20 per person**  
Includes tours, tastings, lunch and transportation

## Sign Up Today!

Spots are limited, there is a max capacity of 40 participants.

To sign up, call or email Ally:

320-762-1121

ally.koudela@runstoneelectric.com



**Runestone Electric**  
ASSOCIATION

## NEWSLINE

The official monthly publication of Runestone Electric Association.

6839 Power Lane SW  
Alexandria, MN 56308

320-762-1121

Fax: 320-763-4149

rea@runstoneelectric.com  
www.runstoneelectric.com

**24/7: 800-473-1722**

### Office Hours:

7:30 a.m. to 4 p.m. Mon- Fri.

### Board of Directors

District 1: Gary (Andy) Anderson, President  
District 2: Barbara Johnson, Director  
District 3: Jon Winter, Director  
District 4: Dave Staples, Secretary  
District 5: Mike Loken, Vice President  
District 6: Joel Seela, Director  
District 7: Matthew Mattson, Treasurer

### Editorial Staff

Al Haman, CEO  
Sue Lundeen, Editor  
Ally Koudela, Communications Specialist

### In Case of a Power Outage

- » Please call 800-473-1722 for 24-hour service. Please report any tree branches in lines, twisted wires, broken poles and if your neighbors are also out of power.
- » Be sure to have a corded phone or a charged cell phone in the house, because cordless phones won't work when the power is out.
- » Program the number above into your cell phone for easy access.
- » Never assume we know you are without power. Always call to report an outage.

*REA will use reasonable diligence to furnish adequate and dependable electric service, but it cannot and does not guaranty continuous and uninterrupted service*

**This institution is an equal opportunity provider and employer**

**Sign up to get text messages from REA on control days!**

Simply text #loadcontrol to 22300  
Msg and data rates apply

## ANATOMY OF A DISTRIBUTION POWER POLE

A power line is used to carry electricity from generation sources to substations, then to homes and businesses. The poles holding these lines and equipment come in different sizes and can be made of metal, wood or fiberglass.

**1. Insulators.** Insulators support wires and prevent undesired flow of electricity. They are made of porcelain or polymer.

**2. Utility pole.** A wood, metal or fiberglass pole weighing up to half a ton. Typically 30-60 feet long, these poles are anchored 5-8 feet into the ground.

**3. Fused cutout.** Provides fault protection by acting like a circuit breaker and isolating the tap line from the main line.

**4. Transformer.** A device that reduces the high voltage to a level safe for delivery to the customer, such as 120 or 240 volts.

**5. Main line neutral.** This line is the neutral conductor in a distribution circuit.

**6. Service drop wire.** An overhead electrical line running from the utility pole to a customer's building or other premises.

**7. Pole ground wire.** This wire is connected to a metal rod driven 8 feet into the ground. Its job is to ground the electrical system.

**8. Guy wire and anchor.** A wire that helps stabilize the power pole.

**Never nail posters or other items to power poles. These can cause a safety hazard for lineworkers.**



Call 811 or visit  
gopherstateonecall.org  
before you dig