

REA WISHES YOU AND YOUR FAMILY A Merry Christmas & Happy New Year!

REA will be closed December 26, 2022 and January 2, 2023.

To report a power outage or an emergency, call (800) 473-1722. We have a 24-hour answering service to take your call.

NEWSLINE

December 2022

In this Issue: **Space Heater Safety** pg 2 **Transmission Projects** pg 3

ATTENTION High School Seniors! It's Time to Apply!

Apply for one of **eighteen \$1,000 scholarships** available through a random drawing.

Scholarship applicants must be a graduating high school senior whose parents or legal guardians are members of REA. Students attending public, private, parochial or home school are eligible to apply. The deadline to apply for the REA scholarships is March 1, 2023. Winners will be announced at the Annual Meeting on April 27, 2023.

Scholarship applications can be filled out online at www.runestoneelectric.com. If you're unable to fill out the application online, call REA for an application at 800-473-1722.



You're Invited!

RUNESTONE ELECTRIC ASSOCIATION

Christmas Open House

Thursday, December 22nd • 1:00 PM - 3:00 PM

Stop in for a visit with the REA Board of Directors! The coffee will be hot and served with cookies from Luther Crest. Pick up a Senior Perspective Cook Book as a token of our appreciation for your business.

While Supplies Last

Remember to use your Annual Meeting Gift Certificate!

If you attended the REA Annual Meeting in April and received a gift certificate, please remember to redeem your certificate at one of the participating REA businesses **before 12/31/22**. A complete list of participating businesses can be found on the gift certificate or online at www.runestoneelectric.com.



Dual Fuel Participants **Tips & Reminders:**

- » During the heating season, the electric heat portion of your dual fuel system may be controlled up to a maximum of 400 hours, however this is rare.
- » Control will not exceed 12 hours per control event.
- » If you're on dual fuel, check the electric and non-electric (dual) parts of your heating equipment now.
- » Fill your fuel tank full in case it needs to run for hours at a time.
- » We anticipate more control in the morning.
- » Check on the likelihood of control by visiting RunestoneElectric.com and select "Today's Load Control"
- » **Sign up to get text messages on control days - text #loadcontrol to 22300.**

Space Heaters Can Dramatically Increase your Electric Bill

Use the formula below to determine what the monthly cost of operating a space heater will be before you plug it in.

Example for a 1,500 watt space heater:

(wattage divided by 1,000) x hours used x cost per kWh = cost per day

Example: (1,500 watts ÷ 1,000) x 24 hours x 9.69¢ (REA's general service rate) = \$3.49 per day

To calculate a monthly cost multiply your cost per day by number of days in the month.

\$3.49 x 30 days = \$104.70. This is your cost per month.

Bottom line: space heaters are convenient, but expensive to use!



REA Board of Director Meeting Highlights October 2022

- » Reviewed the Financial Report for September 2022. Operating expense was down for the month, causing a positive margin instead of the budgeted negative margin. Some budgeted expenses in operations and maintenance are yet to be incurred, which will impact the actuals for the remaining months of 2022. The year-to-date margin remains behind budget and is expected to be that way at year-end.
- » Director Hjelle reported on the October Great River Energy Board Meeting and the committees she participates in. She also reviewed the recent legislative visit to Washington D.C.
- » Director Anderson and CEO Haman reviewed the October STAR Energy Services Board Meeting.
- » Reviewed GRE's winter load control strategy and highlights of the Inflation Reduction Act.
- » Selected dates and locations for the 2023 District Meetings:
 - District 3**, February 13 - Barrett Community Center
 - District 6**, February 15 - Villard Methodist Church
 - District 7**, February 16 - Rolling Forks Vineyard
- » **The regular December Board Meeting will be Thursday, December 22, 2022 at 9:00 a.m.**

Space Heater Safety Tips

Use the tips below to keep your home safe

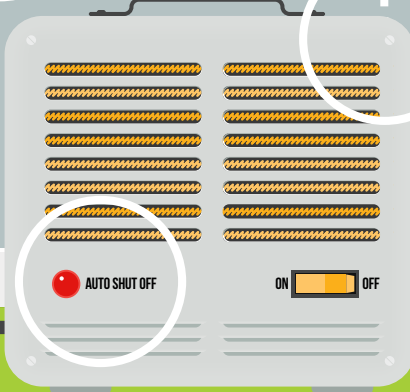
DO: Plug your space heater directly into the wall outlet.



DO: Keep your space heater in low-moisture rooms.

DO: Keep your space heater at a safe distance (at least 3 feet) from kids, pets and flammable items.

DO: Buy a unit with an automatic shutoff in case the unit tips over, or you forget to shut it off.



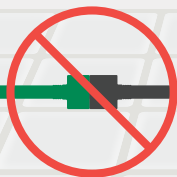
DO: Always follow the directions and take a broken space heater to a qualified appliance service center.



DON'T: Leave your space heater unattended. Always unplug it before you leave the house or go to bed.



DON'T: Use an extension cord to plug in your space heater. It can cause the heater to overheat, and can be a tripping hazard.



DON'T: Place your space heater near curtains, clothing, furniture or bedding.



DON'T: Try to repair a broken space heater yourself.



DON'T: Put your space heater in your bathroom. The moisture can damage the unit, which could cause it to malfunction.



Merry Christmas and Happy New Year from your board of directors!

From left to right: Andy Anderson, Barbara Johnson, Dave Staples, Matthew Mattson, Audrey Hjelle, Clif Patrick and Mike Loken.

THANK YOU FOR BEING AN REA MEMBER!



Al Haman
CEO

A Note from your CEO Let's Talk Transmission

Whenever you flip a switch, charge your smartphone or store food in the freezer, you rely on the grid to bring you reliable electricity.

At a basic level, the electric grid is a set of interconnected wires

connecting places where energy is produced to where it is used. Over time, the grid has become smarter, more dynamic, and increasingly interconnected due to advancements in technology along with additional wind and solar energy resources. Check out the diagram below for a visual explanation of how electricity gets to you.

Great River Energy is the wholesale power supplier to Runestone Electric Association and uses the grid to move energy and information to ensure reliable electric service.

We will hear a lot more about transmission in the coming years. MISO has announced plans for transmission investments totaling \$10.3 billion. MISO (Midcontinent Independent System Operator) is an independent, not-for-profit, member-based organization focused on managing the generation and transmission of high-voltage electricity across 15 states, including Minnesota and Manitoba.

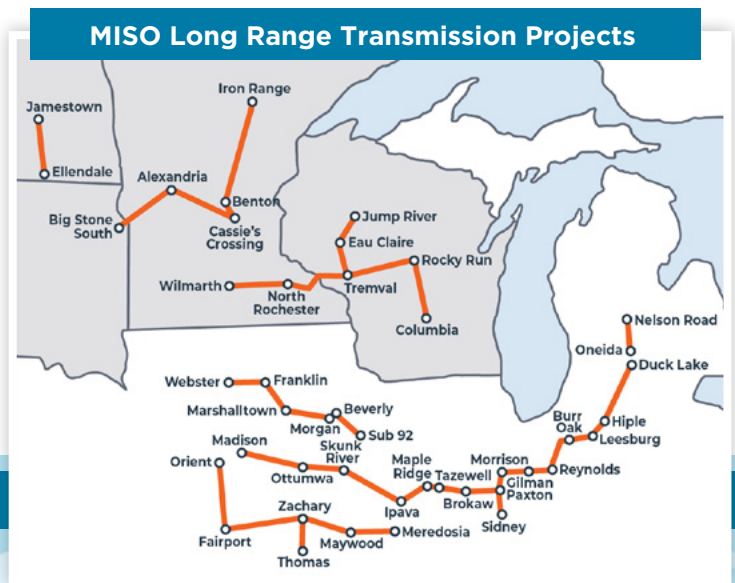
This first portion of transmission expansions across the MISO footprint includes 18 major projects (see map on right). Two of the projects will likely follow existing corridors in Runestone's service territory. One project from Alexandria headed east, will involve

adding the second circuit to the original CapX2020 project along the interstate.

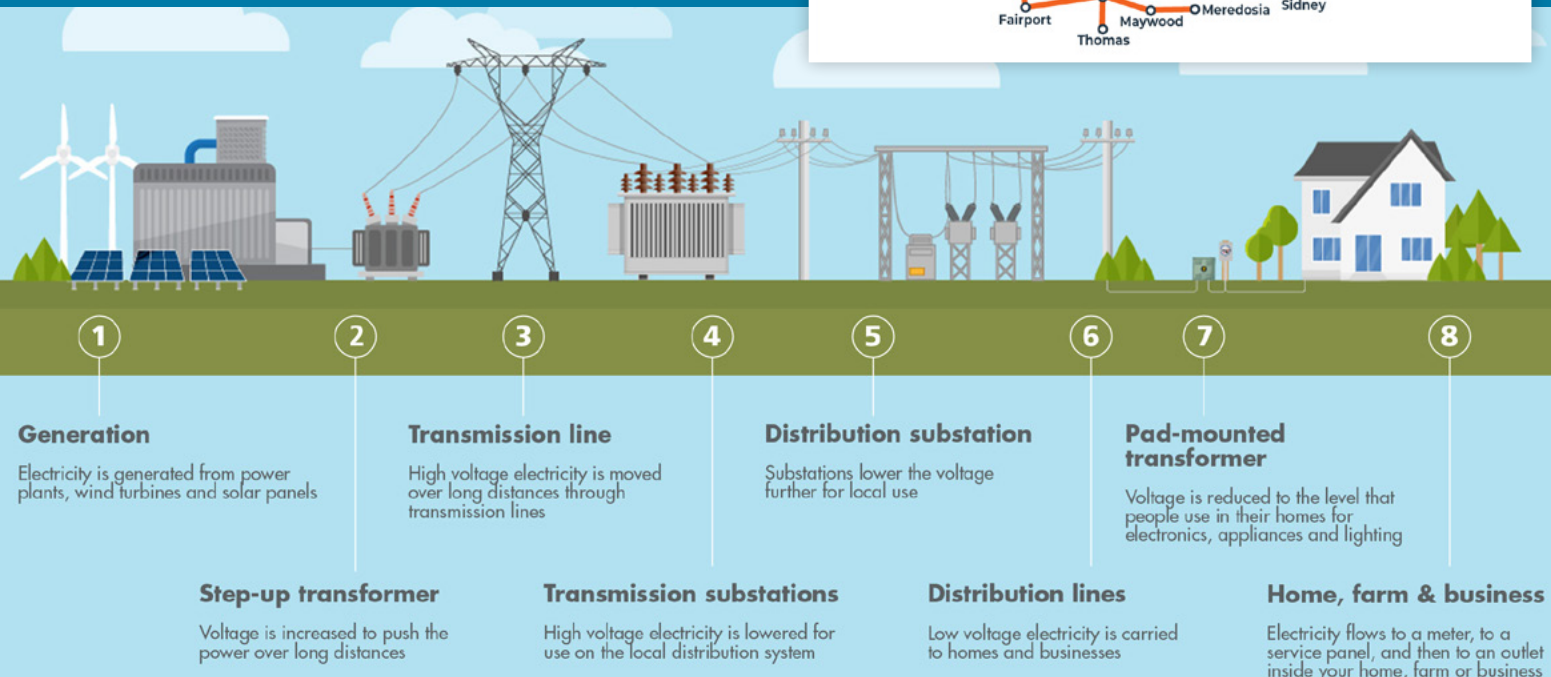
These critical projects are needed for many reasons, including integrating new generation resources like wind and solar, improving resiliency during severe weather events, and helping eliminate transmission congestion.

We will keep you informed as we learn more about the transmission projects. All projects will require approval from state regulatory agencies. Be assured that landowners, local governments and other stakeholders will be included in the project-development process.

As I write this, we are experiencing a day of light snow falling in Alexandria, creating a beautiful outdoor scene. It reminds me of the peace and tranquility we hope for during the holiday season. All of us here at Runestone Electric wish you a safe and happy holiday season!



How Electricity Gets to You



let it GLOW

REA'S CHRISTMAS LIGHT CONTEST

Back in 2022! REA is hosting a Christmas light contest to recognize the members that put hard work into their light displays AND let our communities know where to look for these spectacular lights. Check out the details below.

Categories and Prizes:

- ▶ Best Large Display (\$100 REA bill credit)
- ▶ Best Small Display (\$100 REA bill credit)
- ▶ Most Creative Display (\$100 REA bill credit)

Registration:

Online registration form at www.runestoneelectric.com or call REA at 800-473-1722. Submit photo with address so that the public will know where to go if they want to check out the holiday displays.

Details:

- ▶ Display must be served by Runestone Electric Association (REA)
- ▶ Deadline for contest entry is 12/11/22
- ▶ Map of participating displays will be available at www.runestoneelectric.com after 12/11/22
- ▶ Judging of the lighting displays will take place between 12/16 - 12/18.
- ▶ Winners will be notified on 12/22/22

Look Up and Live!

Before you climb that ladder to string outdoor lights, check for overhead power lines nearby. Make sure tree limbs are not growing among power lines, since they can also become energized. Remember to keep at least 10 feet away from overhead lines at all times.

Have a safe and happy holiday season!

NEWSLINE

The official monthly publication of Runestone Electric Association.

6839 Power Lane SW
Alexandria, MN 56308

320-762-1121

Fax: 320-763-4149

rea@runestoneelectric.com
www.runestoneelectric.com

24/7: 800-473-1722

Office Hours:

7:30 a.m. to 4 p.m. Mon- Fri.

Board of Directors

- District 1: Gary (Andy) Anderson, Vice President
- District 2: Barbara Johnson, President
- District 3: Audrey Hjelle, Director
- District 4: Dave Staples, Treasurer
- District 5: Mike Loken, Secretary
- District 6: Clif Patrick, Director
- District 7: Matthew Mattson, Director

Editorial Staff

- Al Haman, CEO
- Sue Lundeen, Editor
- Ally Koudela, Communications Specialist

In Case of a Power Outage

- » Please call 800-473-1722 for 24-hour service. Please report any tree branches in lines, twisted wires, broken poles and if your neighbors are also out of power.
- » Be sure to have a corded phone or a charged cell phone in the house, because cordless phones won't work when the power is out.
- » Program the number above into your cell phone for easy access.
- » Never assume we know you are without power. Always call to report an outage.

REA will use reasonable diligence to furnish adequate and dependable electric service, but it cannot and does not guaranty continuous and uninterrupted service.

This institution is an equal opportunity provider and employer

Sign up to get text messages from REA on control days!

Simply text #loadcontrol to 22300.
Msg and data rates apply.



Recycle Christmas/Holiday string lights & power cords at the Pope/Douglas Solid Waste Recycle Center, ALP, REA or Ace Hardware Glenwood & Alexandria.
Accepted until January 31, 2023



3 Ways to Improve Fireplace Efficiency

- Close the flue damper when a fire isn't burning.
- Ensure seals around the fireplace damper are tight.
- Insulate your chimney with liners for maximum efficiency.