



Over 9,000 service accounts without power following May 12 storm

More on Page 2.

NEWSLINE

June 2022

In this Issue: **Air Source Heat Pumps** pg 3 • **Planting Guidelines** pg 4



Huge Turnout for EV Safety Training Event

May 3, 2022 - Law enforcement and fire departments learned what to do when responding to an electric vehicle crash at a training event held at Alexandria Technical & Community College (ATCC). Attendees learned about the different types of electric vehicles, tactics for handling electric vehicle crash & fire response, the methods of shutting down/disabling an EV, and emergency site safety. Those that attended also had a chance to look under the hood of five EV's provided by local EV owners and dealers to see the design differences.

The fire and police departments that attended included:

- » ATCC Law Enforcement Program
- » Villard Fire Department
- » Alexandria Fire Department
- » Sauk Centre Fire Department
- » Henning Fire Department
- » Parker's Prairie Fire Department
- » Glenwood Fire Department
- » Willmar Fire Department
- » Alexandria Police Department
- » Evansville Fire Department
- » Carlos Fire Department
- » Millerville Fire Department
- » Forada Fire Department
- » Garfield Fire Department
- » Starbuck Fire Department
- » Lowry Fire Department
- » Eagle Bend Fire Department

Sponsors of the training event included Runestone Electric Association, Great River Energy, Alexandria Technical & Community College and ALP Utilities.

2022 Midwest Farm Energy Conference

The conference will showcase ways to reduce carbon intensity of production agriculture, the use of green hydrogen and ammonia, agrivoltaics for grazing cattle, and robotic weed control.

June 15-16, 2022

West Central Research and Outreach Center

46352 State Highway 329
Morris, MN

For Further Details, visit:
<http://z.umn.edu/mfec2022>



Al Haman
CEO

A Note from your CEO Recovering from a major storm

The storm that blew through Central Minnesota Thursday, May 12th, was one of the worst storms REA has experienced in many years. More than 9,000 of our nearly 15,000 accounts were without power.

After the storm passed, 11 of our 18 substations were down, and four substations were completely without power due to broken transmission poles. Thankfully, most of the outages were restored by Sunday evening.

The storm caused damage to transmission and distribution lines across a wide swath of Runestone Electric's service territory - from Morris to Eagle Bend and everything in between. Repairs involved cutting trees from lines, replacing broken poles, and splicing

broken wires. We had 78 broken or damaged poles that needed to be replaced.

REA crews worked all night Thursday and into Friday evening before we insisted they go home to sleep. Twenty-five additional linemen from ALP Utilities, Lake Region Electric Cooperative, Stearns Electric Association, and Highline Construction joined the REA crews. Everyone worked tirelessly through the weekend to restore power as quickly and safely as possible. We could not have restored power in a timely manner without them!

I want to thank you, our members, for being patient with us as we worked to restore power as quickly and safely as possible. It was a huge undertaking. We appreciate all the cards, letters and many phone calls we have received. It means a lot to all of us here at REA. In fact, I thought I would share a few with you.

Thank you for your speedy restoration of our power. We are lucky to have you as our power provider.

Robert



To All, Wow, all of you have amazed our family.. 48 hours after the big storm and our power is restored. With all of the wide spread damage, we expected power to be out longer. Please pass along our thanks to the crews and all involved in this effort. Thank you!

Tim



Thanks to the crew who worked so hard on Sunday putting poles in the ground and wires back up by our place. Tell them we appreciate that so very much. God Bless!

Kathy & Harold



The max effort approach by your whole crew was greatly appreciated. Everywhere I looked, your trucks were running.

Brian

REA Board of Director Meeting Highlights - April 2022

- » Reviewed the Financial Report for March 2022. Energy sales are over budget for the month and year. Some expense items have been incurred earlier than budgeted, putting the current margin under budget. Our current assets to current liabilities ratio is higher than normal due to drawing long-term loan funds, ahead of rate increases.
- » Director Hjelle reported on the April Great River Energy Board Meeting and the committees she participates in. She also reported on the GRE Annual Meeting and the election of officers for 2022. Director Hjelle was reelected as Board Secretary.
- » Removed the Grid Access Charge from the Cogeneration and Small Power Production Rate and the Rider for Distributed Generation (DG1) due to the cancellation of the Grid Access Charge at the March 2022 Board Meeting.
- » Director Mattson shared details on the 2022 Breakfast on the Farm planned for September 5, 2022, at Rolling Forks Vineyards. REA will pursue sponsorship opportunities.
- » Approved updates to M-03 Member Advisory Council Policy.
- » **The regular June Board Meeting will be Tuesday, June 28, 2022 at 9:00 a.m.**

Advantages of Cooling & Heating with an Air Source Heat Pump

So often we take air conditioning for granted. When it's hot outside, we simply step into our comfortable air conditioned homes or businesses. However, when our air conditioner is not working – that's a problem. Whether you are looking for a new air conditioner because yours is broken, or if you are simply upgrading your older, inefficient system, consider an air source heat pump (ASHP).

ASHPs act like a central air conditioner in the summer time, but they can also provide heating and cooling in one efficient and economical package that looks like a central air conditioning unit.

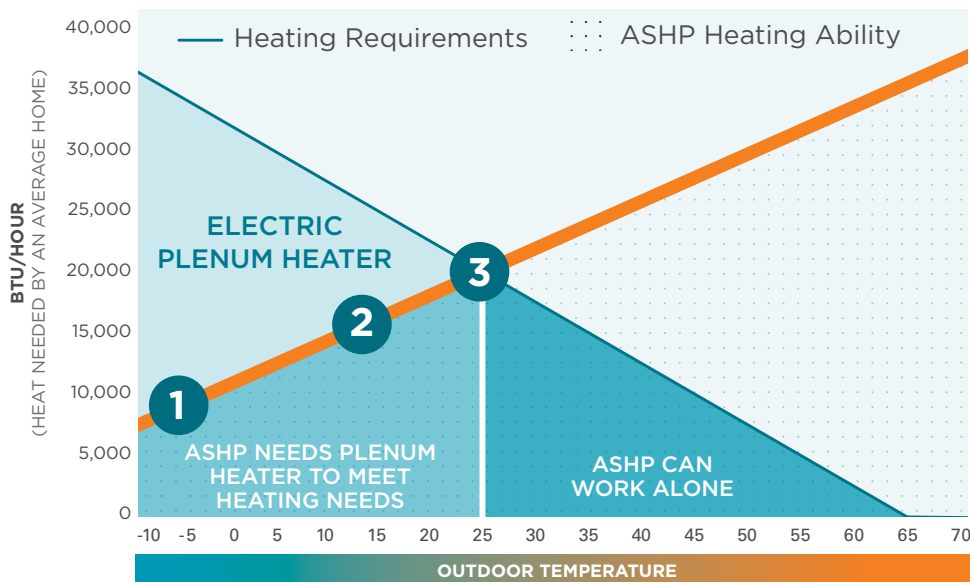
When properly installed, in the winter, an ASHP can deliver 1 1/2 to 3 times more heat energy to a home than the electrical energy it consumes.

In the summer, ASHPs operate like a central air conditioner. In the winter, ASHPs can heat your home by transferring heat energy from the outside air and bringing it indoors.

See Rates and Rebates

Contact REA for more information on air source heat pumps or visit www.RunestoneElectric.com.

ADVANTAGES OF AN AIR SOURCE HEAT PUMP (ASHP)



1. At -5°, an ASHP still 100% efficient
2. ASHP is 200% efficient and 1/2 price of LP at 15°
3. At 25°, an ASHP is nearly 250% as efficient as traditional heat options

Cooling Rates & Rebates

Rates

Air Source Heat Pump
With automatic back-up 7.24¢/kWh
(Or lower depending on complimentary dual fuel system)

Geothermal heat pump
With automatic back-up 6.04¢/kWh

With off-peak heating, off-peak rates may apply to electric water heating.

Rebates

Quality Installation Program

Air Source Heat Pump:

- SEER 14.5 \$480
- SEER 15 \$580
- SEER 16+ \$630

Central Air Conditioning:

- SEER 14.5 \$50
- SEER 15 \$50
- SEER 16+ \$50

Ductless Air Source Heat Pump
(Must be Energy Star® Rated) \$200

Geothermal Heat Pumps \$400

Air Source Heat Pump Paired with Plenum Heater or Boiler
Efficiency Rebate \$100

Electronically Commutated Motor (ECM) \$25

Smart Thermostat \$25

Air Conditioner Tune-up \$25

Cycled Air Conditioning
Bill credit in June, July and August \$7.50

All rates and rebates are subject to change.



Combine REA Rebates with heat pump efficiencies to start saving today!

Air Source Heat Pump



Summer Home Check List Dehumidifier Basics

Using a dehumidifier to suck moisture out of the air can cost more than \$100 a year on electric bills. Consider replacing a standard dehumidifier with an energy efficient Energy Star® model. Replace your old dehumidifier with an Energy Star unit and receive a \$25 rebate from REA.

Contact REA at 800-473-1722 for a rebate form or visit www.RunestoneElectric.com.

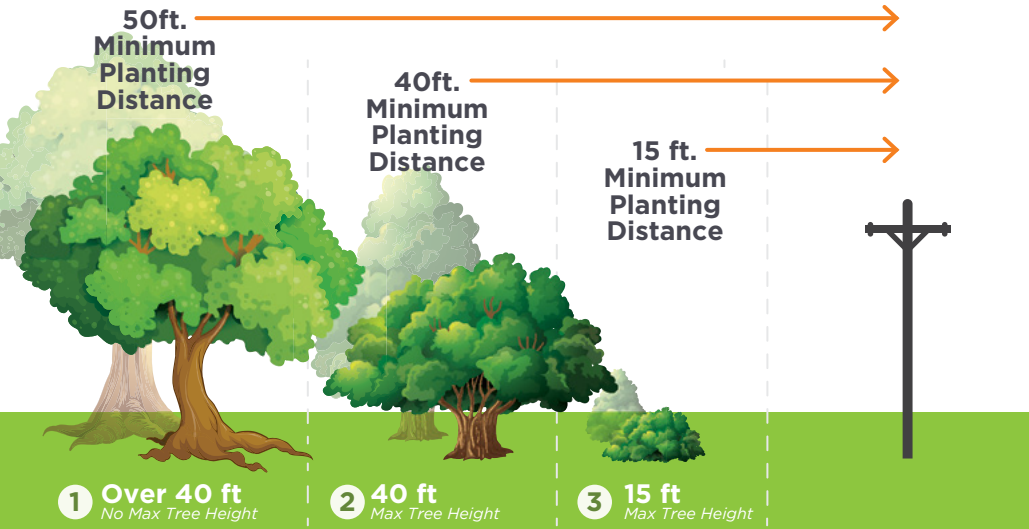
Is Your Electric Heat still on?

REA recommends checking boiler and baseboard heating systems to ensure they are turned off. This easy step can prevent a battle between your cooling and heating system, especially in basements.

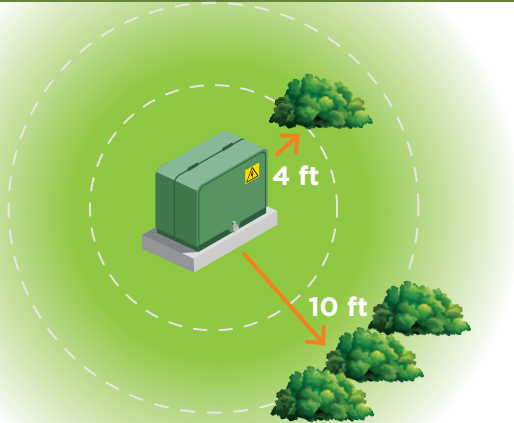
Save money and energy this summer by turning off the heat!

Planting Guidelines

Landscaping is a great way to increase the value of your property and save energy, but trees and shrubs planted too close to power lines and other electrical equipment can create both safety and reliability concerns. You can help maintain power line access and clearance by planning ahead before planting trees and shrubs. These guidelines help ensure a safe and reliable service for all Runestone Electric members.



Quick Tip! Please do not landscape or install fences near REA's pad mount transformers, junction boxes or at the base of power poles. Our crews need plenty of space to access this equipment. Thank you!



Pad Mount Transformers

Mature trees, shrubs, and plants need to maintain 10 feet of clearance in front of doors and 4 feet on all other sides of the box.

- 1 Trees over 40 feet**
These trees must be planted at least 50 feet from the electrical wires and no closer than 35 feet from buildings to allow proper root development and minimize root damage to buildings
- 2 Trees under 40 feet**
These trees may be planted 40 feet from electrical wires, but no closer
- 3 Trees under 15 feet**
These trees may be planted 15 feet from the electrical wires, but no closer.

Cogeneration Notice

In compliance with Minnesota Adopted Rules relating to Co-generation and Small Power Production, Chapter 7835, Runestone Electric is required to interconnect with and purchase electricity from co-generators and small power producers that satisfy the conditions of a qualified facility. Runestone Electric has available and will provide free information to all interested members regarding rates and interconnection requirements. An application for interconnection is required for a qualifying facility to interconnect and operate in parallel with the cooperative's distribution system and is subject to approval by the cooperative. For more information on cogeneration please visit: www.runstoneelectric.com/energy-wise-programs/renewable-energy

NEWSLINE

The official monthly publication of Runestone Electric Association.

6839 Power Lane SW
Alexandria, MN 56308

320-762-1121

Fax: 320-763-4149

rea@runstoneelectric.com
www.runstoneelectric.com

24/7: 800-473-1722

Office Hours:
7:30 a.m. to 4 p.m. Mon- Fri.

Board of Directors

- District 1: Gary (Andy) Anderson, Vice President
- District 2: Barbara Johnson, President
- District 3: Audrey Hjelle, Director
- District 4: Dave Staples, Treasurer
- District 5: Mike Loken, Secretary
- District 6: Clif Patrick, Director
- District 7: Matthew Mattson, Director

Editorial Staff

- Al Haman, CEO
- Sue Lundeen, Editor
- Ally Koudela, Communications Specialist

In Case of a Power Outage

- » Please call 800-473-1722 for 24-hour service. Please report any tree branches in lines, twisted wires, broken poles and if your neighbors are also out of power.
- » Be sure to have a corded phone or a charged cell phone in the house, because cordless phones won't work when the power is out.
- » Program the number above into your cell phone for easy access.
- » Never assume we know you are without power. Always call to report an outage.

REA will use reasonable diligence to furnish adequate and dependable electric service, but it cannot and does not guaranty continuous and uninterrupted service.

This institution is an equal opportunity provider and employer

Sign up to get text messages from REA on control days!
Simply text #loadcontrol to 22300.
Msg and data rates apply.



FREE!
BASEBALL CLINIC!

SUNDAY, AUG. 7 / ALEXANDRIA, MN
OPEN TO EVERYONE, AGES 6-12!

FIELD:
ALEXANDRIA AREA HS
SOFTBALL COMPLEX
4300 PIONEER RD SE
ALEXANDRIA, MN 56308

TIME:
10:30 AM - 12:30 PM

REGISTER:
WWW.PLAYBALLMN.COM

IN CASE OF WEATHER:
DISCOVERY MIDDLE SCHOOL

HOSTED BY:
ALEXANDRIA PUBLIC SCHOOLS
COMMUNITY EDUCATION

